

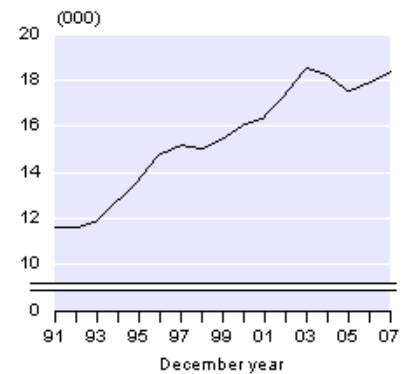
Embargoed until 10:45am – 17 June 2008

Abortions: Year ended December 2007

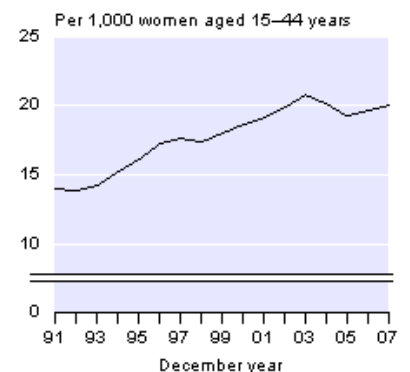
Key points

- There were 18,380 abortions performed in New Zealand in 2007, compared with 17,930 in 2006 and the peak of 18,510 in 2003.
- The general abortion rate was 20.1 abortions per 1,000 women aged 15–44 years in 2007, up from 19.6 per 1,000 in 2006 and 19.3 abortions per 1,000 in 2005, but lower than the 2003 rate of 20.8 abortions per 1,000.
- Women aged 20–24 years had the highest abortion rate (37 abortions per 1,000 women aged 20–24 years) in 2007.
- The median age of women having an abortion was 24.5 years in 2007, unchanged from the previous year.
- In 2007, most abortions (65 percent) were a woman's first abortion.

Number of Abortions
1991–2007



General Abortion Rate
1991–2007



Dallas Welch (Mrs)
Acting Government Statistician

17 June 2008
ISSN 1178-0193

There is a companion Media Release published – [Abortions: Year ended December 2007](#).

Commentary

Number of abortions

A total of 18,380 induced abortions were performed in New Zealand in the year ended December 2007, up from 17,930 in 2006 and 17,530 in 2005, but down from the peak of 18,510 induced abortions in 2003.

Abortion rates

It is important to note that comparisons over time in abortion rates and in the number of abortions are affected by the legal environment and the provision of abortion services.

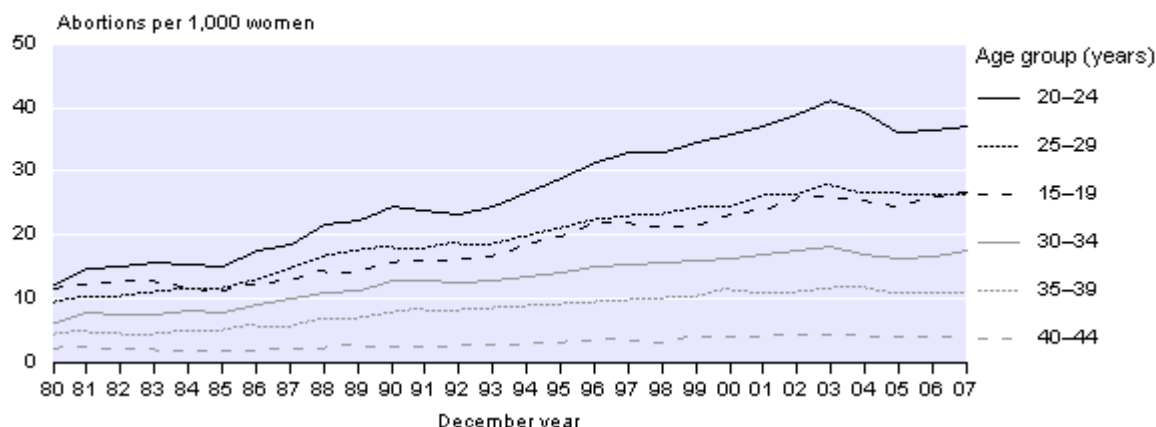
In 2007, the general abortion rate (abortions per 1,000 women aged 15–44 years) was 20.1. This is an increase on 19.6 in 2006, but lower than the 2003 rate of 20.8. The general abortion rate was 17.6 per 1,000 in 1997.

The total abortion rate measures the average number of abortions that 1,000 women would have during their life (based on current age-specific abortion rates). The total abortion rate for 2007 was 619 abortions per 1,000 women, which is 16 percent higher than the rate of 534 per 1,000 recorded a decade earlier in 1997. However, the 2007 rate is 5 percent lower than the peak rate of 648 per 1,000 in 2003.

Abortions by age of women

Women aged 20–24 years have more abortions than any other age group, accounting for approximately 3 out of 10 abortions in any year. Women in this age group also had the highest abortion rate (37 abortions per 1,000 women aged 20–24 years in 2007), significantly higher than any other age group. Beyond age 24, both the number of abortions and the abortion rate decreased with increasing age. Women aged 25–29 years had an abortion rate of 26 per 1,000 in 2007. Teenagers (15–19 years) had a slightly higher abortion rate (27 abortions per 1,000). The median age (half are younger, and half older, than this age) of women having an abortion has remained stable at around 25 years over the last twenty years.

Age-specific Abortion Rates
1980–2007



Proportion of known pregnancies ending in an abortion

In 2007, the abortion ratio was 220 abortions per 1,000 known pregnancies down 4 percent from 230 per 1,000 in 2006. The decrease in the proportion of pregnancies ending in an induced abortion resulted from an 8 percent increase in births offset by a 2 percent increase in induced abortions. Known pregnancies include live births, stillbirths and induced abortions combined.

Previous abortions

In 2007, 65 percent of abortions were a woman's first abortion, compared with 70 percent in 1997. Twelve percent of women having an abortion in 2007 had had two or more previous abortions, compared with 8 percent in 1997.

Duration of pregnancy

Most abortions are performed during the ninth to the eleventh week of gestation. In 2007, 19 percent of abortions were performed during the ninth week of gestation, 20 percent during the tenth week, and 17 percent during the eleventh week.

Ethnicity

Women having an abortion can state more than one ethnicity on the abortion notification form. For this reason, some abortions are counted more than once in the ethnicity figures and ethnic group totals sum to more than the total number of abortions.

In 2007, there were 10,550 abortions to women who identified with the European ethnic group (either as their only ethnic group or as one of their ethnic groups). There were 4,300 abortions to women who identified with the Māori ethnic group, 2,950 women identified with the Asian ethnic group, 2,290 women identified with the Pacific ethnic group and 200 women identified with the MELAA (Middle Eastern, Latin American and African) grouping. Of the 50 women in the 'Other' ethnic group, almost all identified with the New Zealander ethnic group.

International comparisons

International comparisons are affected by both statistical coverage and laws relating to induced abortion. Consequently, differences between New Zealand and other countries' abortion rates should be interpreted with care.

International data for 2007 is not available for many countries, so comparisons have generally been made using 2006 data. In 2006, the general abortion rate (abortions per 1,000 women aged 15–44 years) for New Zealand was 19.6 per 1,000. Germany (7.3), the Netherlands (8.6 in 2005), Scotland (12.5), Denmark (14.3), Norway (15.5) and England and Wales (17.5) had lower rates. In Australia (19.3 in 2004), the United States (19.4 in 2005) and Sweden (20.6), the abortion rate was similar to New Zealand.

For technical information contact:
Anne Howard
Christchurch 03 964 8700
Email: demography@stats.govt.nz

Technical notes

Abortion statistics

Abortion is defined as foetal loss excluding stillbirths, usually during the first 20 weeks of gestation. Induced abortions are those initiated voluntarily with the intention of terminating a pregnancy. All other abortions are called spontaneous abortions, even if an external cause is involved, such as injury or high fever.

All abortion statistics and derived abortion rates included in this release are based on legally induced abortions registered in New Zealand. No information is available on spontaneous or illegal abortions.

Grounds for abortion

In New Zealand the grounds on which an abortion is permitted are described in the Contraception, Sterilisation, and Abortion Act 1977 and in section 187A of the Crimes Act 1961.

In any year, 98–99 percent of all abortions are performed because of serious danger to the mental health of the woman.

Source of abortion statistics

Abortion information is obtained from the Abortion Supervisory Committee. For every abortion carried out as approved under the Contraception, Sterilisation, and Abortion Act 1977, a 'Notification of Abortion' form (ASC Form No. 4) must be filled in by the licensed abortion institution. This is then sent to the Abortion Supervisory Committee.

Changes in the collection of abortion statistics

Changes have been made in the collection of ethnicity data. Before 2006, the MELAA (Middle Eastern, Latin American and African) ethnic group was included in the 'Other' ethnic group. In 2006, statistics on the MELAA group have been produced separately. In addition, the ethnic response of 'New Zealander' was coded and included in the 'Other' ethnic group for the first time. In previous years, New Zealanders were included in the European ethnic group. Ethnicity data for 2006 is not strictly comparable with ethnicity data for earlier years.

In 2004, a new question asking for 'domicile code' was added to ASC Form No 4. However, due to different rates of 'not stated region' across hospitals, regional data should be interpreted with care. The New Zealand Health Information Service base their health domicile codes on the area unit pattern. They are used to represent a healthcare user's usual residential address. The code used from 1 July 2002 is based on the 2001 six-digit area unit code (as used in the Census of Population and Dwellings).

Live births

Live births refer to live births registered in New Zealand by date of registration.

Stillbirths

Stillbirth refers to the birth of a dead foetus that either weighs 400g or more when issued from its mother; or is issued from its mother after the 20th week of gestation.

Revised demographic indices

After each Census of Population and Dwellings, Statistics NZ routinely revises its intercensal population estimates based on the latest census usually resident population count. Statistics NZ has revised population estimates for the 2001–2006 intercensal period. The mean estimated resident population is used as the denominator for calculating various demographic rates, such as abortion rates.

All demographic rates for the 2001–2006 period have been revised based on 2006-base population estimates. The revised rates are not comparable with the 2001-based rates published in previous *Hot off the Press* releases.

Rounding

Abortion figures contained in the tables attached to this release are unrounded. All other figures have been rounded. Derived figures (for example, abortion rates and ratios) have been calculated using unrounded data.

More information

For more information, follow the link from the Technical notes of this release on the Statistics New Zealand website.

Copyright

Information obtained from Statistics NZ may be freely used, reproduced, or quoted unless otherwise specified. In all cases Statistics NZ must be acknowledged as the source.

Liability

While care has been used in processing, analysing and extracting information, Statistics NZ gives no warranty that the information supplied is free from error. Statistics NZ shall not be liable for any loss suffered through the use, directly or indirectly, of any information, product or service.

Timing

Timed statistical releases are delivered using postal and electronic services provided by third parties. Delivery of these releases may be delayed by circumstances outside the control of Statistics NZ. Statistics NZ accepts no responsibility for any such delays.

Tables

The following tables are printed with this Hot Off The Press and can also be downloaded from the Statistics New Zealand website in Excel format. If you do not have access to Excel, you may use the [Excel file viewer](#) to view, print and export the contents of the file.

1. Induced abortions, rates and ratios, 1980–2007
2. Induced abortions by previous abortions, 1991–2007
3. Induced abortions by age of woman, 1991–2007
4. Abortion rates by age of woman, 1991–2007
5. Induced abortions by previous live births, 1991–2007
6. Induced abortions by duration of pregnancy, 1991–2007
7. Induced abortions by ethnicity of woman, 2002–2007
8. General abortion rate, New Zealand and selected low fertility countries, 1997–2006